

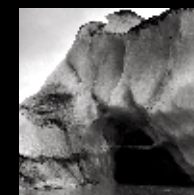
SA FLEXIHEAT ATEX HEATER



UK VERSION 

PATENT PENDING

DEFENDING AGAINST COLD



MANY PROBLEMS...

Low temperatures and humidity often delays projects and fabric maintenance activity. Painting and coating gets rescheduled. Curing takes longer. Costs overrun and deadlines are missed.

...ONE SOLUTION

You asked, we listened, thought and designed a solution that exceeds your needs. ATEX, tough, compact, powerful and user friendly. It can easily be carried to exactly where it is needed. Fully ATEX certified and made with marine grade materials. It is more than able for the toughest environments.

**NOW YOU ARE NO LONGER
DEPENDENT ON THE WEATHER...**

...YOUR PROJECTS CAN BE
COMPLETED EASILY & ON TIME

THE PROBLEM

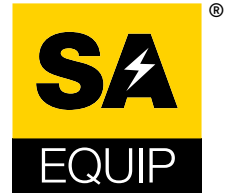
PAINT & COATING CURING

- Is the temperature too low for painting?
- Is the paint taking too long to dry?
- Are your projects getting delayed?



...HEAT WHERE YOU NEED IT

FROM...



THE PROBLEM

COMPOSITE REPAIRS

- Is it the wrong temperature for your composite repairs?
- Are your repairs not curing properly?

THE PROBLEM

CONDENSATION

- Is your environment too damp for painting or repairing?
- Is condensation forming in your work area?

THE PROBLEM

FROZEN MACHINERY & PIPE WORK

- Is your plant freezing or waxing up?
- Are your instruments affected by the cold weather?



THE SOLUTION...



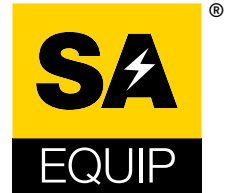
...SA FLEXIHEAT ATEX HEATER

SA FLEXIHEAT[®]

ATEX HEATER



THE BENEFITS



FROM...

- Compact and lightweight
- Weighs only 55kg
- Ergonomically designed



- Highly efficient heating
- Optimized heating element design



- Input Voltage 400V +/-10%
- Operation 50/60Hz
- 3Ph+E or 3Ph+N+E compatible



- ATEX Certified for zones 1 + 2
- IP65
- Temperature rating -20°C to +40°C



- Produces airflow of 2130m³/hour
- 15Kw output
- 15°C temperature rise



- Suitable for stacking and ducting
- SA CYCLONE FLEXIBLE DUCTING connects directly to the heater



- Can be easily moved
- Can be placed close to work area

- The design ensures that no heat is wasted
- No cold spots in the airflow

- This heater provides greater flexibility
- The same heater can be used in many different locations

- Incredible performance means this heater can be used in almost any environment
- High specification standard brings peace of mind

- The powerful airflow and efficient heating will heat any area impressively quickly

- Heaters can be connected by ducting to provide more powerful heating
- Can be used in different configurations

TYPICAL CONFIGURATIONS

1

HEATER INSIDE
THE WORK AREA



- Fastest way to increase the temperature
- Recirculates the same air
- No ducting needed

2

HEATER INSIDE THE
WORK AREA WITH
DUCTING TO OUTSIDE



- Minimal heat loss
- Fresh air brought in
- Provides the necessary air changes

3

HEATER OUTSIDE THE
WORK AREA WITH
DUCTING TO INSIDE



- Keeps fan out of working area
- Quieter
- Fresh air brought in

4

HEATER WITH DUAL DUCTING



- Keeps fan out of work area
- Safe, clean air brought in
- Less chance of bad air being brought in

5

MULTIPLE HEATERS



- Heats area extremely quickly
- Less ducting in working area
- This configuration can also be used inside work area



COMPATIBLE WITH



DUCTING

SA CYCLONE 30cm FLEXIBLE DUCTING is highly durable, antistatic and flame retardant.

It is available in 5m and 10m lengths, along with various couplers to allow for many different configurations.



MDU

Unique and unrivalled design. Marine grade stainless steel envelopes and protects GRP enclosure.

Ultra compact, totally stable 3 phase power distribution.

Full MCB protection.

Integrated cable storage hooks and carry handles.

Also bringing you:

SA SLAM

Portable
Worklights

SA LUMIN

Handheld &
Task Lighting

SA CYCLONE

Ventilation

SA POWERNET

Power Distribution

SA COMBO

Kits



PATENT PENDING

For more information about
SA Products and Services
please contact our customer
support team on:

0845 844 4000

T: +44 (0)333 240 6111

F: +44 (0)333 240 6555

info@saequip.com

www.saequip.com

SA Equip LLP 10 Clifton View
East Mains Industrial Estate
Borburn EH52 5NE
United Kingdom



UK	EUROPE	AFRICA
AUSTRALASIA	AMERICAS	
MIDDLE EAST	FAR EAST	

TOGETHER IN THE EXTREME

Copyright © 2015 SA Equip LLP All rights reserved